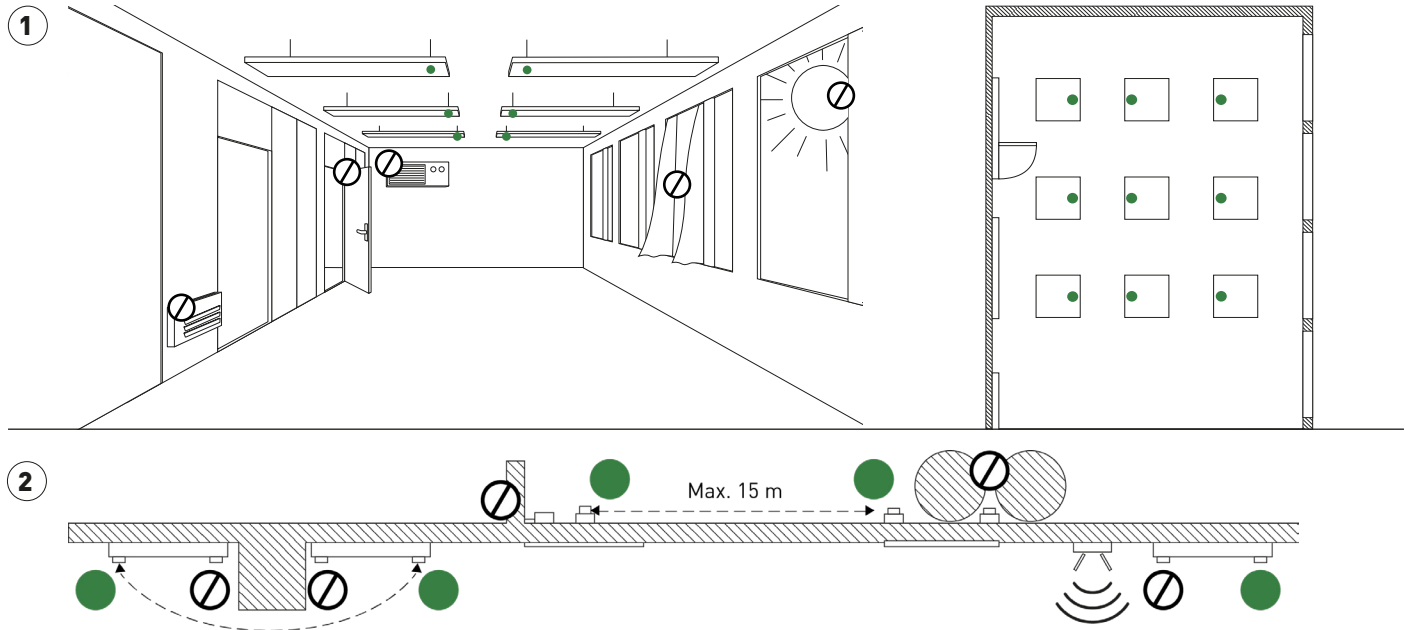


Helvar ActiveAhead Sensor Positioning

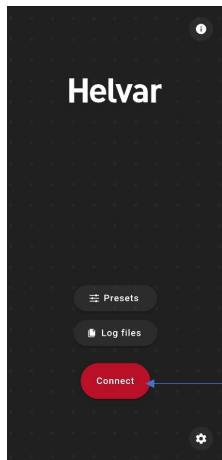


- 1**
- Sensor positioning**
- Recommended ActiveAhead sensor position.
 - ⊘ For optimal sensor operation, do not place near these areas.
- Note!** Avoid sensor's exposure to direct sunlight.

- 2**
- Nodes must be placed at the installation so that the radio signal is not blocked by building's structure, such as, concrete bars or ventilation pipes.
 - Nodes must have enough of free air next to them and must not be placed in between two blocking elements, such as, luminaire's driver box and wall preventing the Node from sending and receiving radio signals.
 - Nodes must not be placed next to other radio devices (e.g. Wi-Fi routers)

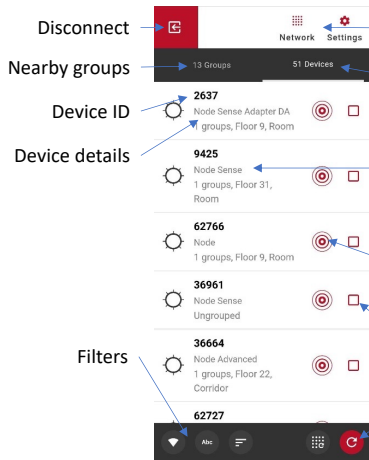
Mobile App Quick Start Guide

Home view



Start

Main view



Disconnect

Nearby groups

Device ID

Device details

Filters

Access network operations

Nearby devices

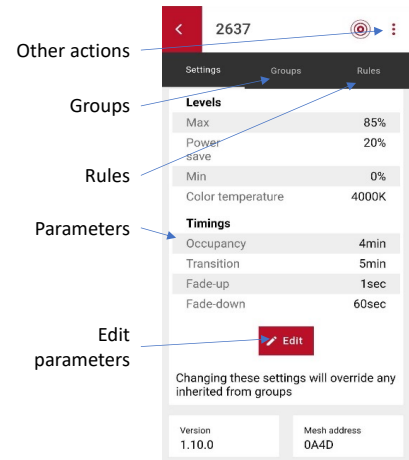
Open device view

Identify

Select for grouping

Scan for more

Device view



Other actions

Groups

Rules

Parameters

Edit parameters